

Moving on... from Reception to Year 1!

Meet The Year 1 Team!



Mrs. Dobbin



Miss Edwards



Mrs. Bondsfield



Mrs. McKenzie



Mrs. Johnstone



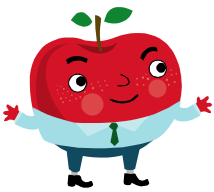
Mrs. Wilson



Miss Phillips



Mrs. Edwards



Apple Class - Mrs Dobbin and Mrs Mckenzie
Pear Class - Miss Edwards
Peach Class - Mrs Bondsfield and Mrs McKenzie



Our teaching Assistants are Mrs. Wilson, Mrs. Johnston,
Miss. Phillips and Mrs. Edwards

Timings of the school day...

8.40 am Doors open.

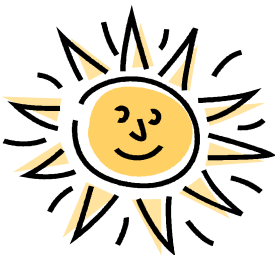
8.50 am Registration.

10.40-11.00 Morning Break.

12.10-1.10 Lunch time.

Flexible Afternoon Break.

3.20 Home Time.



First thing in the morning...

Please wait with your child and then say goodbye to them before they come into the cloakroom through the double Year 1 blue doors at 8:40-8:50am. Children will then put their belongings on their peg and take their book bags to the classroom.

Teaching assistants will be available for you to pass on quick messages but please bear in mind this is a very busy time! We are happy to make appointments after school to discuss any queries.



Water bottles... are kept in the class, in a named bottle, for drinking throughout the day. There will be a boys and girls water bottle box.



Fruit Time... children will be given a piece of fruit daily but may also bring in their own from home to eat at playtime.



Milk... may be paid for online (please ask at the reception desk for website details)



P.E... We have two PE lessons per week. One indoor session and one outdoor session, so warm clothes and trainers for the winter! Please bring kit on a Monday **WITH ALL ITEMS NAMED PLEASE** and take it home on a Friday. P.E kit is: plain white T-Shirt, blue or black shorts, trainers (or plimsolls), a change of socks, tracksuit/ jogging bottoms and a sweatshirt (for outside use when cold). Long hair must be tied back on this day. No earrings or jewelry please. (Please note that earrings need to be taped only for the first 6 weeks after being pierced. After this date the children or parents need to remove them in accordance with the County's Safety Policy.) Please provide your child with tape if needed for earrings.

The children will exit the classrooms from their class doors.

Please do not allow small children to play with our outdoor toys before or after school.

These topics are subject to change.

These are the topics we covered this year ...



- **Terrific Toys!** - Look at our favourite toys, sort them, and find out how they work, look at old toys and find out what toys our grandparents played with.

- **Amazing Animals** - Identify, describe and compare a variety of common animals. Identify and name parts of the human body and say which part of the body is related to each sense.

- **Christmas** - The First Christmas, Christmas activities

- **The Jolly Postman** - Focus on the story of The Jolly Postman, walk to a postbox, look at local maps and find where we live, look at and talk about the leisure facilities in the Felpham, post letters and write addresses.

- **We all join in!** about different sounds, instruments. Reading, workshop.



Music and sound topic - thinking investigating and making listening and writing poetry. Music



- **How does your garden grow?** -Planting and growing beans, seeds and cress, spring flowers, things plants need to grow healthily, food we eat. Trip to Staunton Country Park (approx. £12) to learn about how different plants grow.

- **Dinosaurs and all that rubbish-** Science - materials - sorting and investigating different types of objects and materials. How do we know about Dinosaurs? How can we find out information? Dinosaur facts, clay Dinosaur models.



Homework...is given out half termly with a Topic overview

The focus is always on phonics and reading in Year 1. Half termly suggested topic related activities will also be given if you feel your child can cope with them.

Children will have a Homework Book to work in which will need to be handed in at the end of each half term for marking and sharing with the class.

Reading... Parents are encouraged to hear their child read EVERY DAY and change their child's reading books when ready, commenting in the Home Reading Notebook. Please **do not put your child onto the next level** (colour band) without discussing it with the class teacher first.

Parent/Grandparent helpers... are greatly appreciated for hearing readers, working with groups, sharing talents or interests on a regular or occasional basis. Please see your child's class teacher! Thank you!!

Performance... is at Christmas time!

House points....the children have been put into houses - Arundel, Petworth, Goodwood and Fishbourne. Children will earn house points and will receive rewards.
50 = yellow star 100 = red star

We are looking forward to working with your children and having a productive and fun year.

Year 1 team

